



**Solutions for**  
Oil, Gas and Energy Production



**Spare parts for the  
Sunstrand, Sundyne and  
Sunflow pumps lines**

## Gearbox Kits suitable for Sundyne® Pump Type LMV-311



Our complete gearbox kits suitable for Sundyne® pump type LMV-311 allow a quick and easy overhaul of failed gearboxes.

All single components meet the highest material and quality standards and are fully compatible with the original pump parts.

Gears are hardened and precision ground and meet the requirements of AGMA (American Gear Manufacturers association) quality class 11.

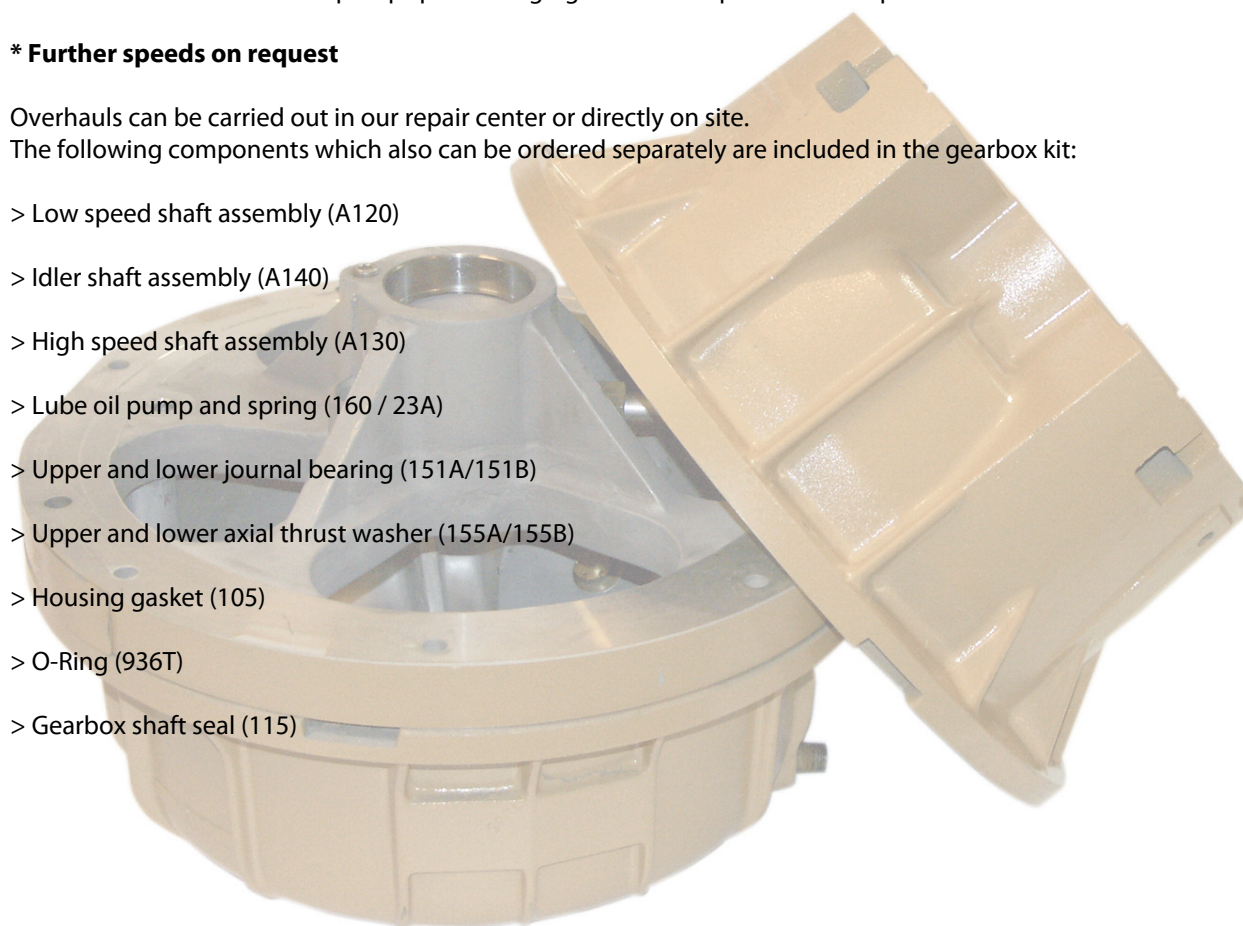
Gearbox kits are available for pump speeds ranging from 6.859 rpm to 17.178 rpm\*.

### **\* Further speeds on request**

Overhauls can be carried out in our repair center or directly on site.

The following components which also can be ordered separately are included in the gearbox kit:

- > Low speed shaft assembly (A120)
- > Idler shaft assembly (A140)
- > High speed shaft assembly (A130)
- > Lube oil pump and spring (160 / 23A)
- > Upper and lower journal bearing (151A/151B)
- > Upper and lower axial thrust washer (155A/155B)
- > Housing gasket (105)
- > O-Ring (936T)
- > Gearbox shaft seal (115)



## Gearbox Kits suitable for Sundyne® Pump Type LMV-322

Our complete gearbox kits suitable for the Sundyne® pump type LMV-322 allow a quick and easy overhaul of failed gearboxes.

All single components meet the highest material and quality standards and are fully compatible with the original pump parts.

Gears are hardened and precision ground and meet the requirements of AGMA (American Gear Manufacturer) quality class 11. Gearbox kits are available for pump speeds ranging from 9.146 rpm to 14.227 rpm\*.

**\* further speeds on request**

Overhauls can be carried out in our repair center or directly on site.

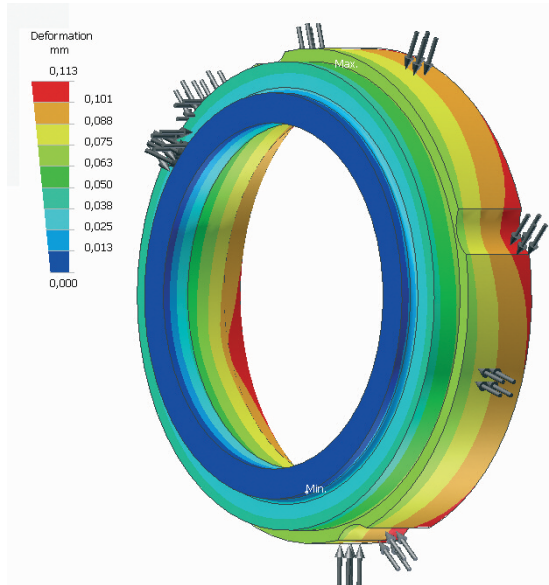
The following components which also can be ordered separately are included in the gearbox kit:

- Low speed shaft assembly (A120)
- High speed shaft assembly (A130)
- Lube oil pump (160)
- Spring (23A)
- Upper and lower journal bearing (151A/151B)
- Upper and lower axial thrust washer (155A/155B)
- Housing gasket (105)
- O-Ring (936T)
- Gearbox shaft seal (115)





## Compact seal suitable for Sundyne® Pumps



Deformation analysis of the stationary carbon ring at  $\Delta P$  20bar



The medium lubricated mechanical seal type KPS is specially designed for the application in Sundyne® high speed pumps. Identical main dimensions with the original seals allow for easy installation and interchangeability\*. By applying the latest FE calculation methods the stationary carbon ring is designed to provide superior sealing performance combined with high operating safety

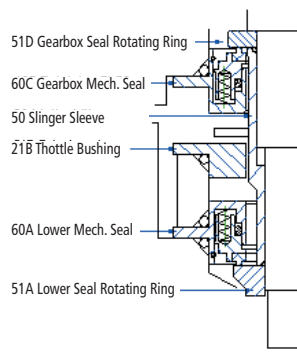
- Multi springs
- Bi-directional
- Secondary seal: PTFE U-cup or Elastomer

Two seal sizes are available:

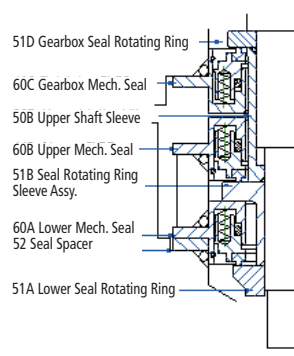
**Type KPS-317: Lower seal (Pos. 60A)**

**Type KPS-381: Upper seal (Pos. 60B)**

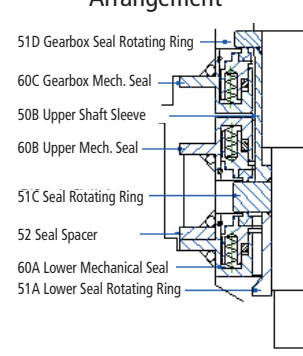
### Single Seal Arrangement



### Tandem Seal Arrangement



### Double Seal (Face to Face) Arrangement



#### Operation limits

Temperature:	-50°C to +220°C
Pressure:	max. 45barg
Speed:	max. 22.000 rpm

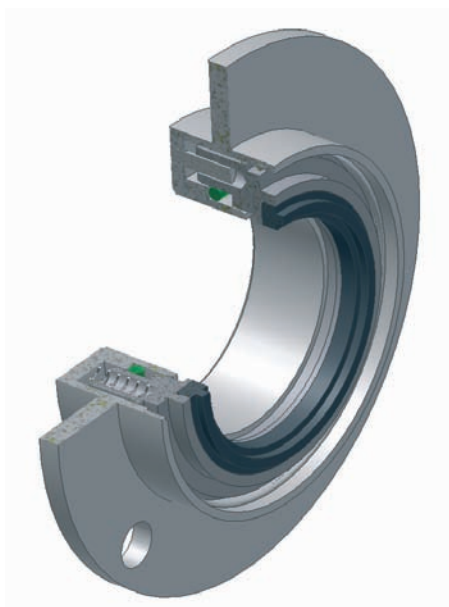
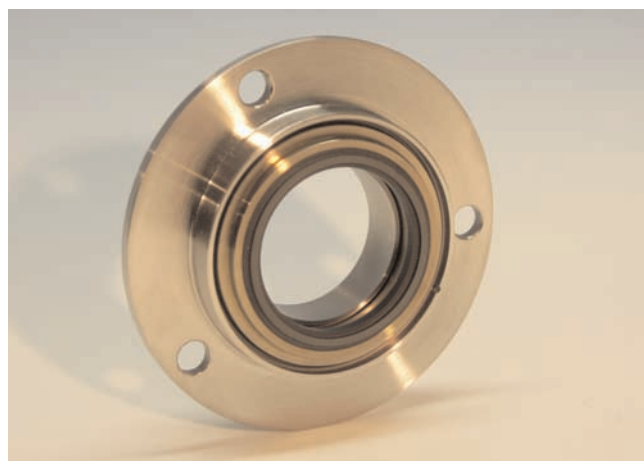
#### Standard materials

Seal face:	carbon resin impr.
Springs:	stainless steel
Seal retainer:	stainless steel
Secondary seal:	PTFE U-cup, Viton®, EP-rubber etc.

**further materials on request**

\*Due to its design our seal repair kits consisting of the stationary seal ring, the springs, the back up ring and the secondary seal will fit in the original Sundyne® mechanical seal retainer

## Gearbox compact seal suitable for Sundyne® Pumps



The medium lubricated gearbox mechanical seal type KPX is specially designed for the application in Sundyne® high speed centrifugal pumps.

Identical dimensions with the original seals allow easy installation and interchangeability\*.

Due to special design features the KPX seal can operate under reverse pressure thus providing maximum operating safety.

Contamination and subsequent gearbox failure following a product entry due to a pump side mechanical seal collapse is excluded.

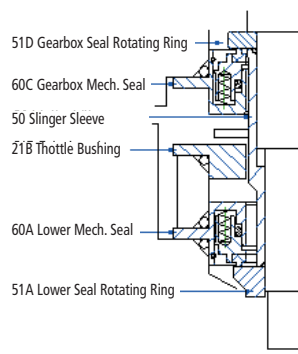
### Design features

- Multi springs
- Bi-directional
- Reverse pressure capable

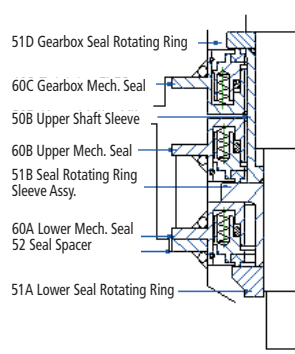
Seal designation:

**KPX-381, gearbox compact seal (Pos. 60C)**

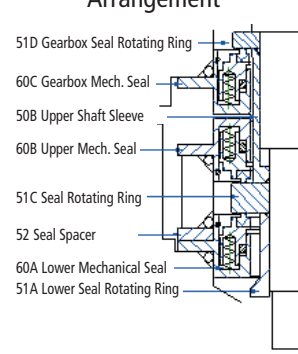
### Single Seal Arrangement



### Tandem Seal Arrangement



### Double Seal (Face to Face) Arrangement



### Operation limits

Pressure:	max. 20barg
Temperature:	-50°C to + 180°C
Speed:	max. 22.000 rpm

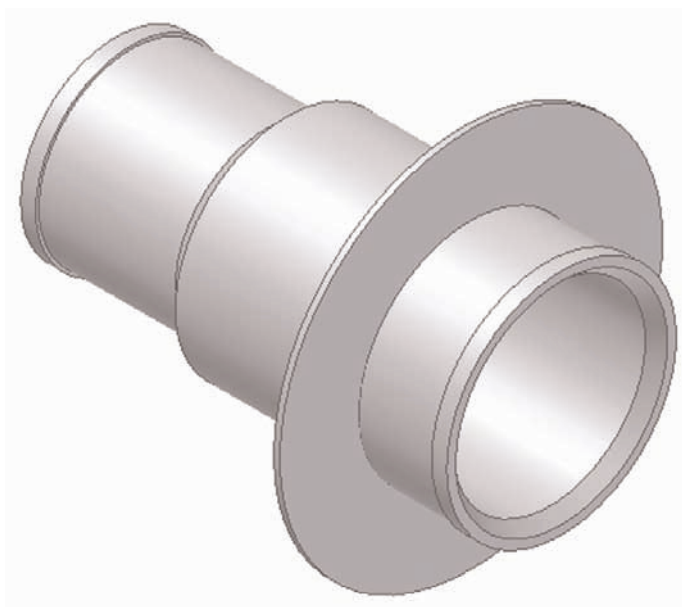
### Standard materials

Seal face:	carbon antimony impr. in stainless steel body
Secondary seal:	Viton®
Springs:	stainless steel
Seal retainer:	stainless steel

**further materials on request**

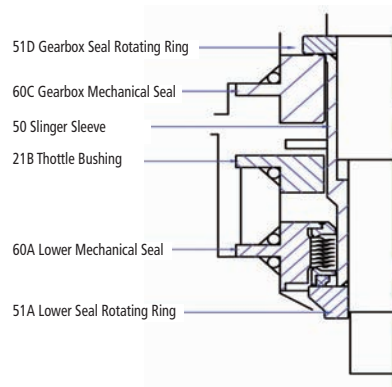
\* Due to its design our seal repair kits consisting of the stationary seal ring, the springs, the back up ring and the secondary seal fit in the original Sundyne® mechanical seal retainer

## Shaft Sleeves and Rotating Seal Rings suitable for Sundyne® Pumps

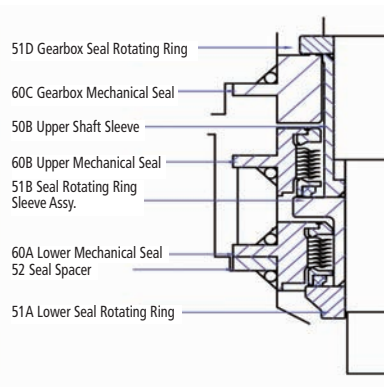


For the single, tandem and double mechanical seal arrangements we offer a complete range of stainless steel shaft sleeves and tungsten carbide rotating seal rings suitable for Sundyne® Pumps and Compressors.

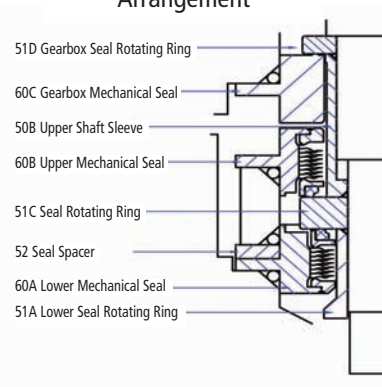
Single Seal Arrangement

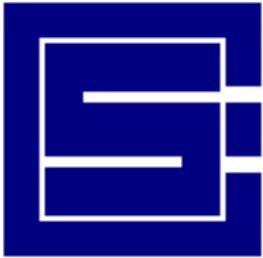


Tandem Seal Arrangement



Double Seal (Face to Face) Arrangement





## Solutions for Oil, Gas and Energy Production



For more information please contact us:

### **Compressor Supply & Engineering P/L**

2/23 Perivale Street, Darra, Q4076, Australia

Ph : +61 7 33764166

Fax : +61 7 33767200

Mob : +61 (0)439427042

Email : [john-cse@bigpond.net.au](mailto:john-cse@bigpond.net.au)